

Muse of The Morning
create something wonderful



Christmas Pickle Ornament **PDF Sewing Pattern**

www.museofthemorning.com

Christmas Pickle Ornament

Copyright & Terms of Use:

This design is ©Copyright 2022 by Muse of the Morning LLC, All Rights Reserved. Reproduction of this pattern is strictly prohibited by US and International copyright law. No part of this design may be reproduced in print or electronically, including, but not limited to pattern pieces, embroidery design, diagrams, instructions, and photographs.

This pattern is for your personal and non-profit, non-commercial use only. Mass production and commercial use of this pattern is prohibited.

www.museofthemorning.com



Follow me on Instagram at www.instagram.com/museofthemorning/
Post pics of what you make with this pattern with the hashtag
#museofthemorning



Table of Contents

Pattern Notes	Page 3
Required Fabrics & Notions	Page 4
Resources for Fabrics & Notions.....	Page 4
Printing Instructions	Page 5
Sew the Pickle Sides Together.....	Page 6
Embroider the Pickle.....	Page 7
Finish Up the Pickle	Page 8
Embroidery Stitch Guide.....	Page 9
Pattern Sheet	Page 10



Pattern Notes:

Please read all INSTRUCTIONS before beginning to sew the pattern.

NO SEAM ALLOWANCE is needed for this pattern.

STITCHING is shown on diagrams in contrasting colors so that it is easy to see.

ALL STITCHING should be done with THREE strands of embroidery floss unless otherwise indicated.

Required Fabrics & Notions:

For Printing and Cutting Out Pattern: A printer, regular printer paper, freezer paper sheets or a pencil and freezer paper roll, Sulky Sticky Fabri-Solvly

For Cutting Fabric: fabric scissors, an iron

For Completing the Pattern: embroidery needle size 5

Felt – 9x12 inch sheets of Eco, Synthetic, Wool Blend or 100% wool felt:
~ 1 sheet of felt in a dark green color

Embroidery Floss - cotton embroidery floss in matching colors to match the felt

Stuffing - poly fil or wool stuffing

Resources for Fabrics & Notions:

These are sources for my favorite supplies for this project:

Wool Felt – check on Etsy (www.etsy.com) for 100% merino wool felt

Cotton Embroidery Floss – my favorite brand is DMC - <http://amzn.to/2dGi7Yn>

Printable Freezer Paper - <http://amzn.to/2dxZwBy> - or make your own with our tutorial: www.museofthemorning.com/freezerpaper

Sulky Sticky Fabri-Solvly Stabilizer - <http://amzn.to/2h2jCRd>

Wool Stuffing - <http://amzn.to/2gDb7Px>

Cotton Batting – I like Warm & Natural brand – <https://amzn.to/351uKMD>

Tips & Tricks For Sewing With Felt - A post on the Muse of the Morning website:
www.museofthemorning.com/felt

Embroidery Design Resources - A post on the Muse of the Morning website:
www.museofthemorning.com/embroidery

Printing Instructions

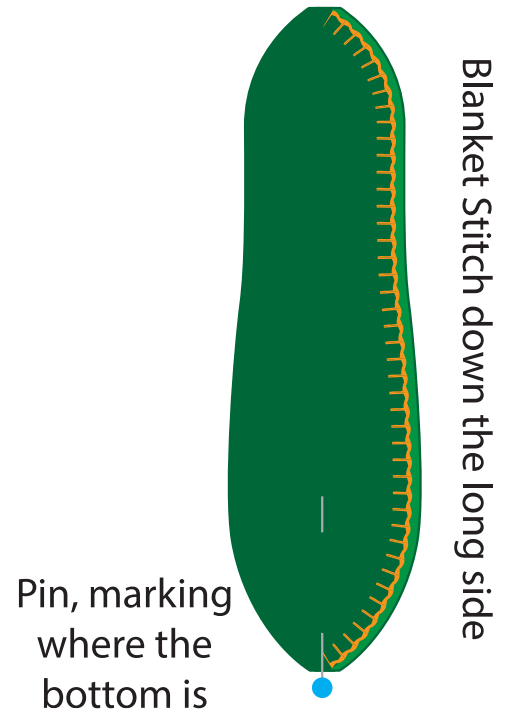
Pattern sheets can be printed onto freezer paper. This will make cutting out much easier, especially with the small fiddly bits. It may be recommended that pieces with a lot of embroidery should be printed on Sulky Fabri-Solvy. In both cases, pattern and embroidery sheets can be printed onto regular paper and then traced onto the freezer paper or Fabri-Solvy. Please see the resources section for where to purchase these products.

Freezer Paper:

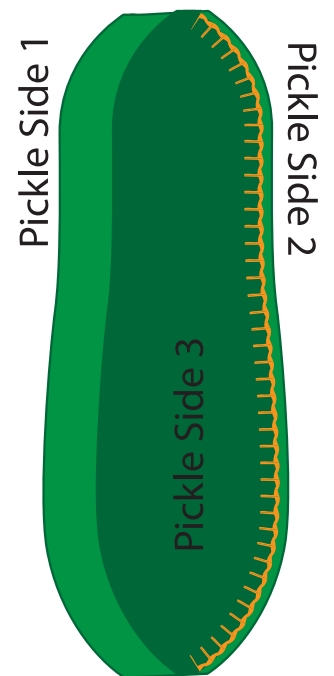
1. Print PATTERN SHEET 10 onto the DULL side of freezer paper.
2. Cut out all pieces from the freezer paper, leaving approximately ¼ inch all the way around.
3. Place a freezer paper shape onto the sheet of felt of the color you would like, with the SHINY side down. Using an iron on medium heat (no steam), iron the freezer paper to the felt for 10-20 seconds. Repeat with the other freezer paper pieces and felt sheets.
4. Cut out the pattern pieces along the printed lines.
5. Leave the freezer paper in place until you're ready to sew, so you can refer to the names of each pattern piece while following the assembly instructions.

Sew the Pickle Sides Together

1. Take two PICKLE SIDE PATTERN PIECES and match them together along the long side.
2. Mark the bottom end of the pickles, so they'll be easy to continue matching up.
3. Stitch the two sides together with a blanket stitch, down one long side.



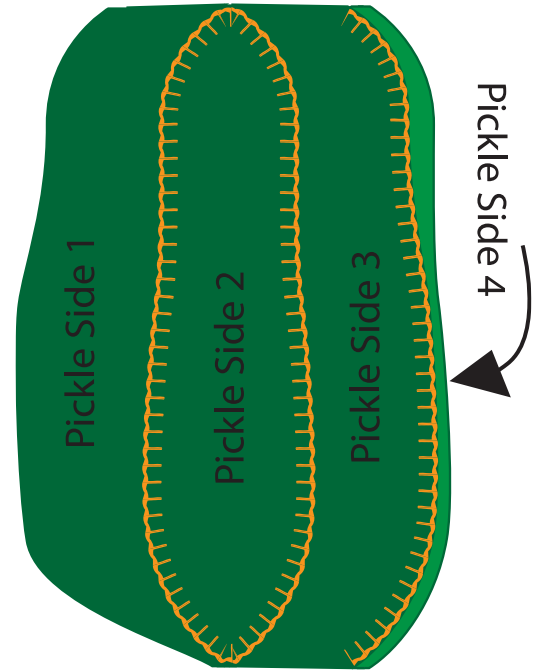
4. Match up a third PICKLE SIDE with one of the others, along the long *unstitched* side, making sure the top and bottom are at matching ends.



5. Stitch these two pickle sides together with a blanket stitch down the long side.

6. Match up the fourth PICKLE SIDE piece with one of the others, along the long *unstitched* side, making sure the top and bottom are at matching ends.

7. Stitch these two pickle sides together with a blanket stitch.



Embroider the Pickle

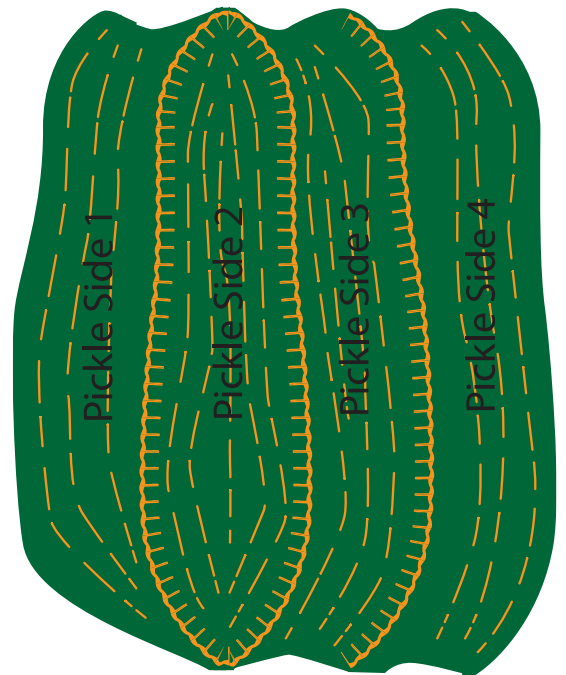
1. The pickle should be four PICKLE SIDES sewn together. Stitch parallel rows of running stitches with varying lengths down the length of each PICKLE SIDES.

Designer's Tip!

I found it easiest to embroider the pickle, while the sides are sewn together, but not all the way. Feel free to embroider before the sides are together!

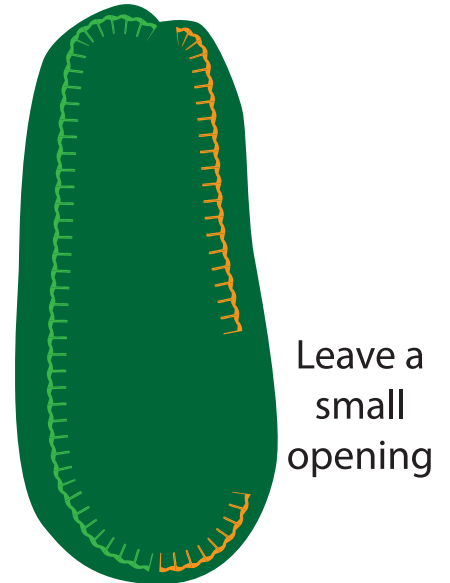
Embroidery Options:

You don't have to use a running stitch for the embroidery. Some other options are to use french knots, or use running stitches in combination with other stitches, like a fly stitch. You could also use sequins to create the cucumber texture.

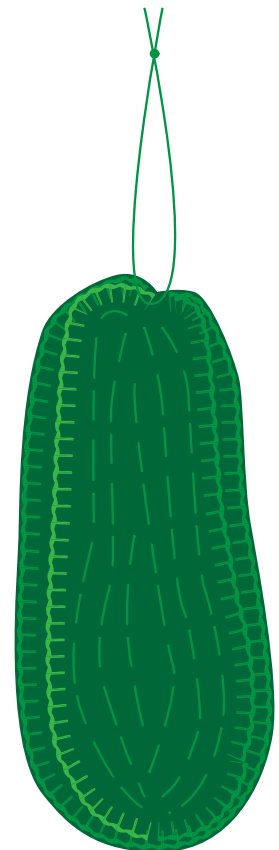


Finish Up the Pickle

1. Once the embroidery is finished, match the final two sides together.
2. Stitch the final two sides, and along the top and the bottom of the pickle with a blanket stitch, leaving an open area near the bottom.
3. Stuff the pickle firmly with batting.
4. Stitch up the opening with a blanket stitch.



5. Thread a length of the embroidery floss through a couple stitches at the top of the pickle and tie off a loop to create a hanger to hang on the tree.



Viola! You are finished!

Stitch Guide

The following are stitches used in this pattern.

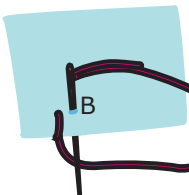
Blanket Stitch



Bring your needle up at A from the back about 1/8" in from the edge.

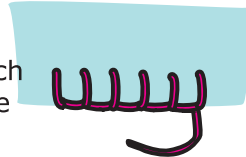
Bring your needle up from the back again, so it comes out the same spot and creating a loop around the edge.

Take the needle through the loop of the stitch you just made. This anchors the thread.

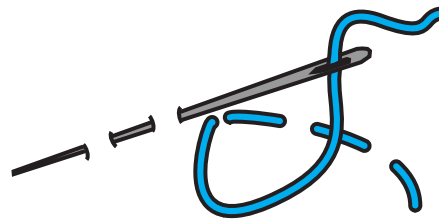


About 1/4" away, put the needle through at B and through the loop of thread.

Continue each stitch like this around the edge of appliques and blankets!



Running Stitch



Begin by bringing the needle up through the fabric.

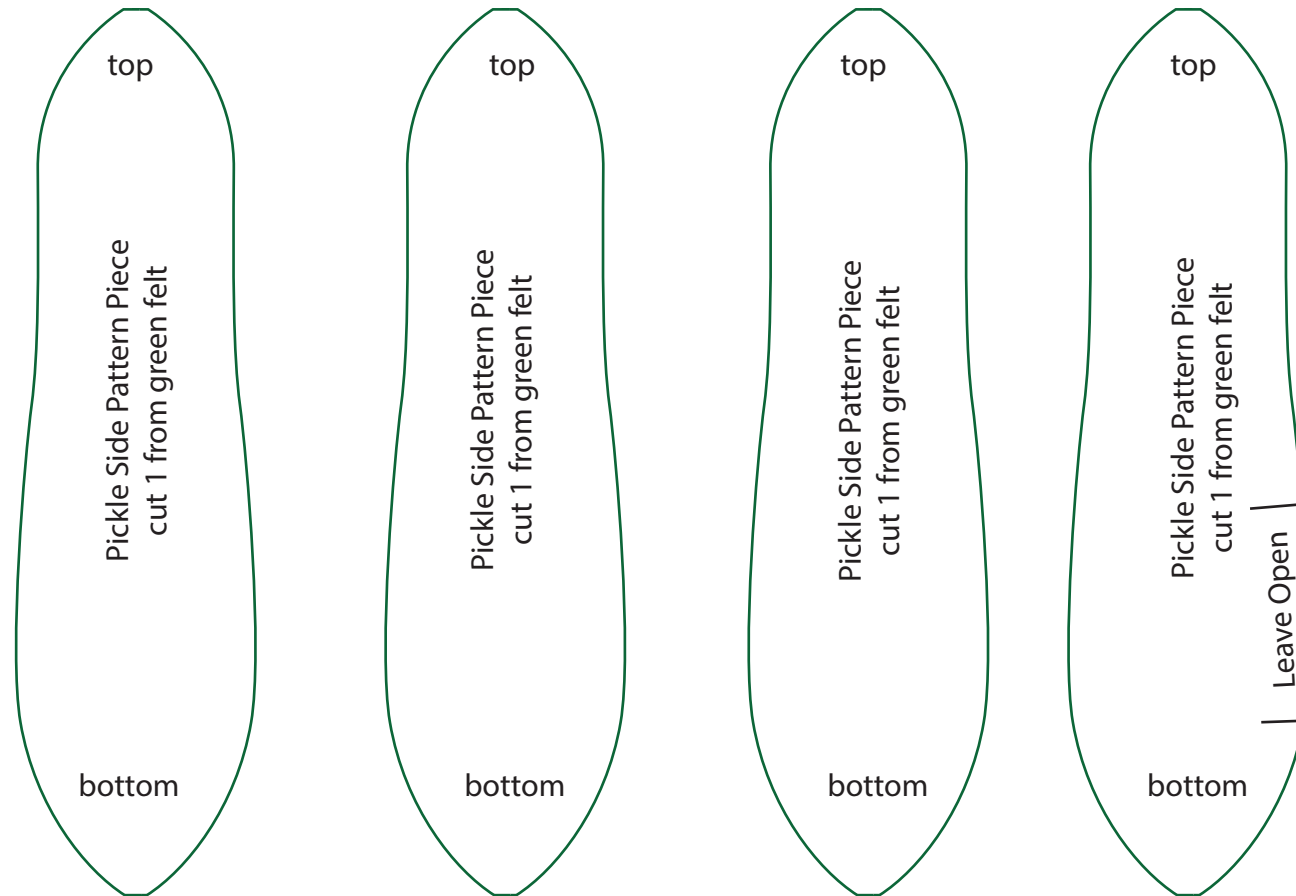
Insert the needle back through the fabric about 1/4" from where it came up.

Bring the needle back up again, about 1/4" from where it went down, making a second stitch.

Tip: The trick to making a running stitch look great is to keep the stitches even.

Christmas Pickle Ornament

Print this page onto freezer paper.



For personal use only

© copyright 2022 by Muse of the Morning LLC